

Bulletin

Kristiansund Grand Prix & Arctic Securities Chess Stars



Nr 4	2010-08-30	Price: 5 NOK
Arctic Securities Chess Stars		2
Standings		15
Best position		15
Best games of day four		16
Final standings Kristiansund GP		18

Editor: Axel Smith

Arctic Securities Chess Stars

J.L. Hammer – V. Anand

1.d4 ♘f6 2.c4 e6 3.g3

Anand himself played the Catalan against Topalov in Sofia.

3...d5 4.♘f3 ♙e7

Topalov played 4...dxc4 in every game, as the active player he is.

5.♙g2 0-0 6.0-0 dxc4 7.♗e5

The main move in the half open Catalan.

is 7.♙c2 a6 8.♙xc4 b5 9.♙c2 ♗b7

7...♗c6 8.♙xc6 bxc6 9.♗xc6 ♙e8

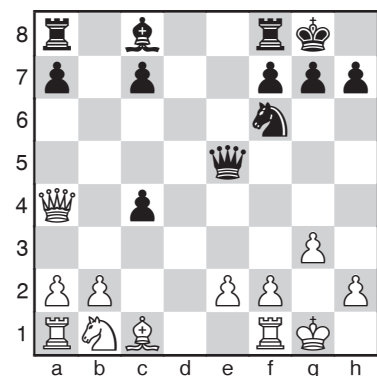
10.♗xe7+ ♙xe7 11.♙a4

Black is a pawn down but has compensation with the light squared bishop. With the pawn on g2 instead of g3 this would be winning for white.

11...e5

11...c5 was Anand's choice against Malakhov 2002.

12.dxe5 ♙xe5



13.♗c3

Hammer doesn't take the pawn The main move is 13.♙xc4 but it allows black to develop with tempo: 13...♙e6 14.♙d3 ♙ad8

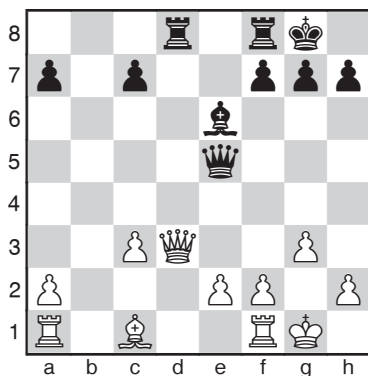
13...♗e4

Black could also have defended the pawn with 13...♙e6 14.♙f4 ♙c5

14.♙xc4 ♗xc3

Here Hammer thought for the first time in the game, but he didn't look at the board, which probably means that he tried to remember his preparation.

15.bxc3 ♙e6 16.♙d3 ♙ad8



17.♙f4!

An important intermediate move.

17...♙h5 18.♙a6 ♙c8!

Anand changes the a-pawn for the e-pawn, which is a good strategic decision, since white will not anymore be able to close the long diagonal with f2-f3.

19.♙xa7 ♙xe2 20.♙fe1 ♙f3 21.♙e3 ♙c6

22.♙e4!

Black threatened ♙b7, but Hammer is in time to chase the black queen away from the diagonal.

22...♙a6 23.♙ab1

Stopping ♙b7.

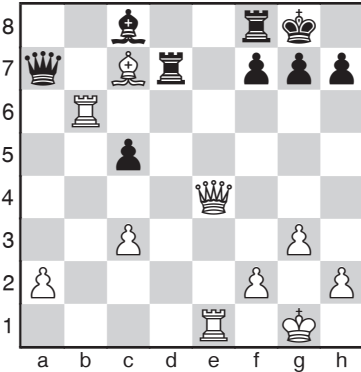
23...c5

Simply to stop Hammer from capturing the pawn.

24. ♖c7!

Hammer is not satisfied with the pawn, which actually isn't much in this position, but plays actively to disrupt the coordination for the black pieces.

24... ♖d7 25. ♖b6 ♖a7



After 25... ♖a2 26. ♖d6 black can't move his rook due to back rank mate, but he has the intermediate move 26... f5, vacating f7 for the king. But f5 is a weakness, and c5 drops off, so white is clearly better here. The best option was probably 25... ♖d3, exchanging the queens. White will be a pawn up in the endgame, and the opposite coloured bishops has both advantages and disadvantages.

26. ♖d6! ♖xb6 27. ♖xf8 h6

Black has no good moves, since 28... ♖b7 is met by 29. ♖xc5! ♖xc5 30. ♖e8+ ♖h7 31. ♖xd7. Therefore white should probably just play a calm move here.

28. ♖e5?!

Probably a mistake. 28. ♖c8 looks strong, but black has 28... ♖c6! White has no good discovered check and ♖b7 is suddenly on the agenda again.

28... f6 29. ♖xc5

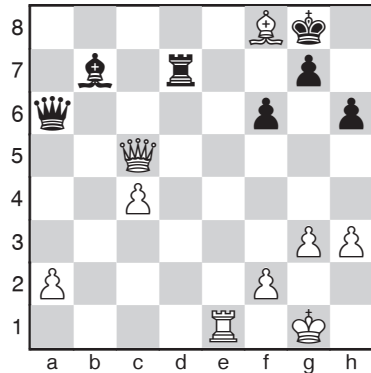
This gives white some problems to

release the bishop on f8. Anand is now two pawns down but he probably has more than full compensation. 29. ♖xc5 ♖c6 30. ♖e8+ ♖h7 31. ♖c4+ isn't working: 31... ♖xc4 32. ♖xc4 ♖d1+ 33. ♖g2 ♖b7 and black is better.

29... ♖a6 30. h3 ♖b7

Black threatens to win with either ♖c6 or ♖c2. Hammer defends against one of these threats.

31. c4?



31... ♖xa2?

31... ♖c6 with double threat against h3 and e1. Black wins since 32. ♖xc6 ♖d1+ 33. ♖h2 ♖h1# is mate.

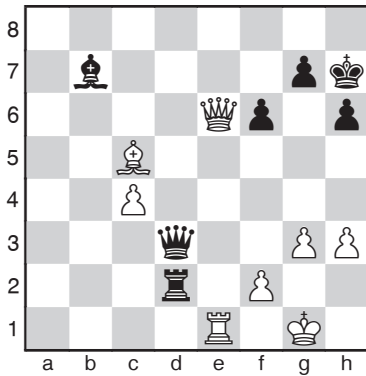
32. ♖f5 ♖a4

32... ♖c2! followed by ♖d1 wins.

33. ♖e6+ ♖h7 34. ♖h2

Hammer should definitely have played 34. ♖f5+ after which black has three moves. a) 34... ♖g8 35. ♖e6+ repeats, b) 34... g6 35. ♖f4 wins for white c) 34... ♖h8 35. ♖g6 and white threatens to win with ♖xg7+. Black can defend the e8-square with 35... ♖c6 but even here white can sacrifice: 36. ♖xg7+ ♖xg7 37. ♖xh6+ ♖g8 38. ♖xf6 and white would win in case of a queen exchange.

34... ♖c2 35. ♖c5 ♖d2 36. ♖g1 ♖d3



37.g4?

Hammer tries to exchange queens with ♖f5 and get a draw, an understandable wish, but sadly this is a losing move. Better was 37.♖e3 but black has a pleasant position here.

37...♗d1! 38.♘b4 ♜xe1+

38...♗xh3 was even stronger. 39.♗f5+ g6 and the d7-square is defended.

39.♘xe1 ♜xh3 40.♗f5+ ♔h8!

White is out of checks.

41.f3 ♜xf3 42.♗xf3 ♘xf3 0-1

This is completely lost.

M. Carlsen - J. Polgar

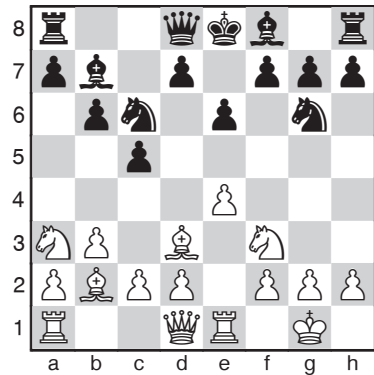
1.e4 c5 2.♟f3 e6 3.b3

b3 systems in the sicilian are best when black has played e6, since he can't close the diagonal with e5 in one move.

3...b6 4.♘d3 ♘b7 5.0-0 ♟e7

When white develops his bishop to b2 he has no control over f4, and Polgar uses this fact by developing the knight to g6.

6.♞e1 ♟g6 7.♘b2 ♟c6 8.♟a3



It's not good for white to try to get control with 8.e5 since black simply develops with ♘c7, 0-0 and challenges the pawn with f7-f6. Black can actually also play the surprising 8...d5 9.exd6 ♘xd6 10.♘xg7 ♞g8 11.♘b2 ♟f4 with advantage. White can improve with 11.♘xg6 but even there black has good compensation.

8...♟d4!?

Using tactics to exchange a piece, but this gives white some development advantage.

9.♟c4

9.♟xd4 cxd4 and white can't take on d4 due to the knight on a3.

9...♟xf3+ 10.♗xf3 ♗c7

10...f5 is way to early. Black is still two moves from castling and white will open the position with devastating effect.; White has two ways of using the downside of playing 10...♘e7 immediately. One is 11.♗g3 11...0-0 12.♟d6 with some control, and the second is the surprising 11.♘xg7 ♞g8 12.♘b2 ♟h4 13.♗h5 ♞xg2+ 14.♔h1 when the black position looks very active, but he has problems developing without losing material.

11.a4 ♘e7 12.♗g3

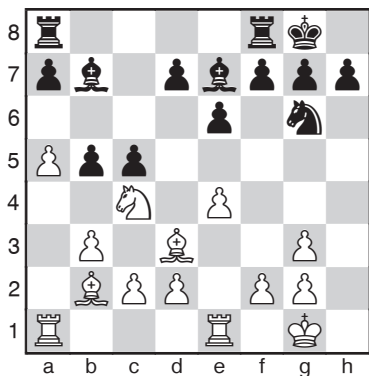
Now 12.♘xg7 is a bad move, since black

will be able to castle long.

12...♖xg3 13.hxg3 0-0 14.a5

Gaining some space.

14...b5



15.a6!

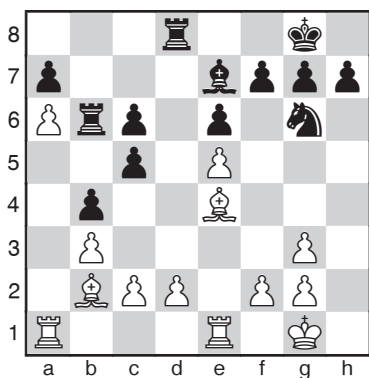
The only logical follow up to 14.a5.

15...♗c6 16.♘a5 ♖ab8 17.e5 ♖b6

18.♗xc6 dxc6 19.♗e4 ♖d8 20.♗c3

Forcing a weakness.

20...b4 21.♗b2



21...♗f8

It was strong to capture on d2: 21...♖xd2!

22.♗d3 c4 23.bxc4 (23.♗xc4 ♖xc2 and

white has to exchange the rook with

24.♖c2) 23...♗c5 24.♖f1 ♖b8 25.♗c1

♖xd3 26.cxd3 ♗xe5 with compensation.

22.♖ed1 ♗d7 23.d4

Carlsen has no knights, so he has to open up the position to be able to attack the black weaknesses.

23...♗f8 24.♗f1 ♗b8 25.dxc5!

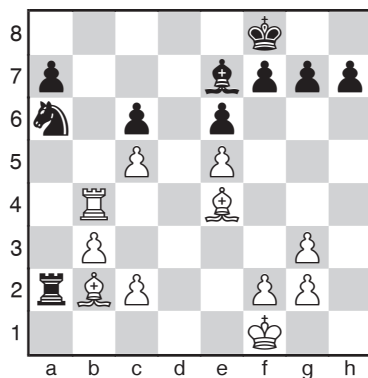
Carlsen uses some tactics to open the position.

25...♖xd1+ 26.♖xd1 ♖xa6 27.♖d4 ♖a2

28.♖xb4!

Only this intermediate move justifies white's 25th move.

28...♗a6



29.♖a4

29.♖b7 doesn't win a pawn: 29...♖xb2

30.♖xa7 ♗xc5 31.♖a8+ ♗d8 32.♖xd8+

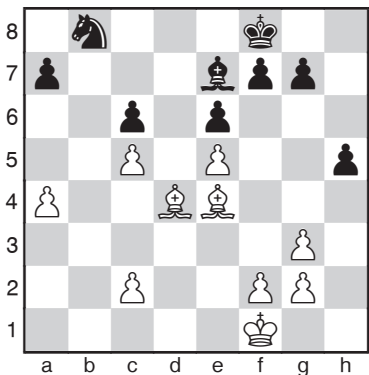
♗c7 33.♖d4 ♗xc4 34.♖xc4 ♖xc2

29...♖xa4 30.bxa4 ♗b8 31.♗d4

Carlsen is a pawn up. The pawn doubled and can't advance, but it can be useful covering squares and defending one of the bishops. Carlsen has to use his space advantage and the bishop pair if he wants to make progress.

31...h5!

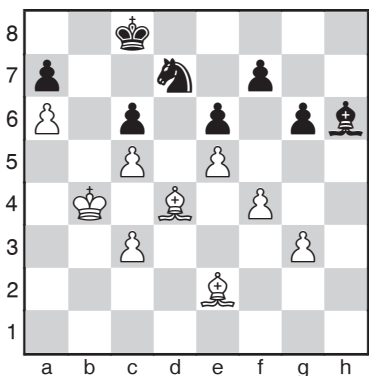
Now white has to exchange one pawn if he wants to get in f4-f5. It's often good for the defender to setup the pawns so they defend each other, leaving only one weakness to protect.



32.♔e2

Now for many, many moves it's not happening much in the game.

32...♗e8 33.♔d3 ♕d7 34.♔c4 g6 35.f4
 ♗c7 36.♙f3 ♔d7 37.g4 hxg4 38.♙xg4
 ♙f8 39.♙f3 ♙h6 40.g3 ♔c7 41.♙e2 ♗d7
 42.♙d3 ♔b7 43.♔b4 ♙f8 44.a5 ♔c7
 45.a6 ♙h6 46.♔c4 ♗b8 47.♔b3 ♗d7
 48.♔b4 ♙f8 49.♙c4 ♙h6 50.c3 ♗b8
 51.♙e2 ♗d7 52.♔c4 ♗b8 53.♔b3 ♗d7
 54.♔b4 ♔c8



55.f5?

Carlsen is too optimistic about his chances. The closed nature of the position favours black.

55...gxh5 56.♙h5 ♗b8

56...f6 57.exf6 e5 is also okay.

57.♔a5 ♙g5 58.♙xf7 ♙d8+ 59.♔a4 ♔d7
 60.♙h5 ♗xa6

Polgar has won her pawn back and has a better position with the passed pawn on the a-file.

61.♔b3 ♗c7 62.♙f3 ♗d5 63.♔c4 ♙g5

64.♔b3 ♙d2 65.♔c2

65.g4 should probably be played here.

65...♙e1 66.c4

66.g4 is no longer possible due to 66...

fxg4 67.♙xg4 ♙xc3! 68.♙xc3 ♗c3+

69.♔d3 ♗hxg4 even if it's possible that black can't win here.

66...♔b4+ 67.♔b3 ♗a6 68.g4 fxg4

69.♙xg4 ♙b4 70.♙f3 ♙xc5 71.♙c3

Now things have changed, and the bishop pair is one of white's saving chances.

71...♙e7 72.♙d4 ♙c5

72...♗c5+? 73.♙xc5 and the opposite

coloured bishops secure a draw.

73.♙c3

The game does again enter a manouevring phase where Polgar slowly improves her pieces.

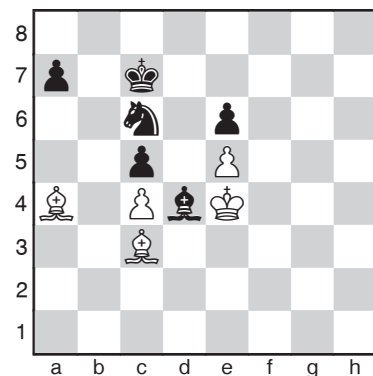
73...♙b6 74.♔c2 ♙f2 75.♔b3 ♗c5+

76.♔c2 ♔c7 77.♙a5+ ♔d7 78.♙b4 ♗a6

79.♙c3 c5! 80.♔d3 ♗b8 81.♙d1

This is close to a mistake. Safer was 81.♙d2, transferring the bishop to f4.

81...♗c6 82.♙a4 ♔c7 83.♔e4 ♙d4



84.♔d2!

84.♙xc6 ♖xc6! 85.♙xd4 cxd4 86.♖xd4 a5 and black changes the a-pawn for the two white pawns and wins.

84...a6

84...♗xe5 85.♙f4 ♖d6 is a draw, since black is never able to move any of his pieces!

85.♙e1 ♖b6 86.♙g3 ♙c3 87.♙f4 ♖c7

88.♙g3 ♖b8!

Black's plan is ♖d7-b6 and a5-a4.

89.♙f2 ♙b4 90.♖f4

90.♙d1 stops black's plan, since 90...♖d7 91.♙g4 hinders the knight from reaching b6.

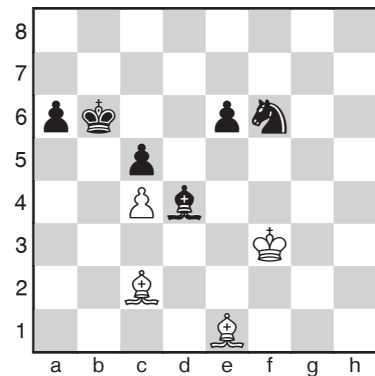
90...♖d7 White's position is probably lost.

91.♖g5 ♙d2+ 92.♖h5 ♙f4 93.♙b3!

Carlsen realizes that his king march didn't gain anything and starts to defend again, two pawns down. 93.♙xd7 ♖xd7 94.♙xc5 ♙xe5 loses quite easily.

93...♙xe5 94.♖g4 ♖f6+ 95.♖f3 ♙d4

96.♙e1 ♖b6 97.♙c2



97...e5?

Too hasty, and allows white to penetrate with the king.

98.♙h4 ♖c8 99.♖e4 ♖c7 100.♖d5

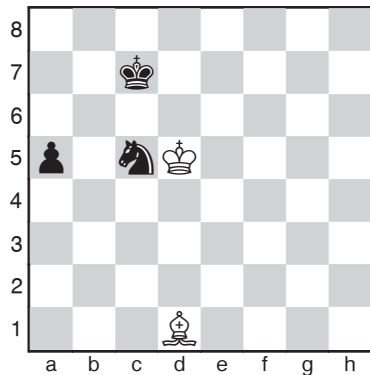
Now black has difficulties to make progress.

100...♖d6 101.♙e7 ♖c8 102.♙xc5

Only move, but good enough.

102...♙xc5 103.♖xc5 ♖b6 104.♙d1

♖d7+ 105.♖d5 a5 106.c5 e4 107.♖xe4 ♖xc5+ 108.♖d5 1/2-1/2



V. Anand - J. Polgar

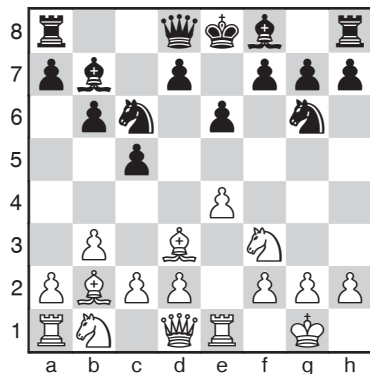
1.e4 c5 2.♖f3 e6 3.b3

Anand continues with the strategy of copying Carlsen's strategy against Polgar, but deviated on move 8.

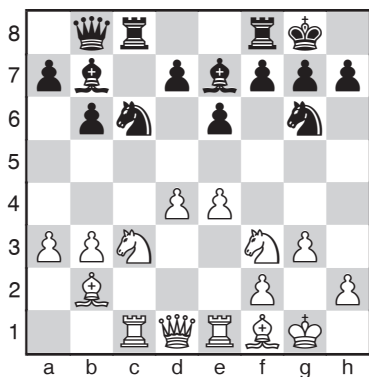
3...b6

Last time Polgar immediately deviated from her previous game, but this time she has faith in her variation.

4.♙d3 ♙b7 5.0-0 ♖e7 6.♙e1 ♖g6 7.♙b2 ♖c6



8.♔f1 ♖c7 9.c3 ♜c8 10.d4 cxd4 11.cxd4
 White has a better position with the centre.
 11...♙b4 12.♟c3 0-0 13.♞c1 ♜f4 14.a3
 ♙e7 15.g3 ♜b8



16.h4!

Anand uses his centre control to attack on the flank. Now black's best is probably 16...h5, even though it's a funny move to play.

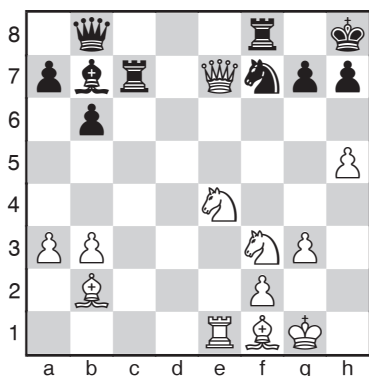
16...f5 17.h5 fxe4?

Just giving white a tempo for free.

18.♟xe4 ♟h8 19.d5 exd5 20.♞xd5+ ♟f7
 21.♞xd7

Actually black has more problems than it seems at first sight. White threatens ♞g4, when black can't defend g7.

21...♙h8 22.♞xc6 ♞xc6 23.♞xe7 ♞c7



24.♞h4

Anand missed 24.h6 ♞xc7 25.♙xg7+ ♙g8 26.♟f6# In the game white also has an easily winning position.

24...♞c2 25.♞e2 ♞xe2 26.♙xe2 ♜c7
 27.♙c4 ♟h6 28.♟fd2 b5 29.♙xb5 ♜c2
 30.♜e7 ♞g8 31.♞xb7 ♞xb2 32.♞xa7
 ♟f5 33.♞c5 ♟d4 34.♙c4 ♞d8 35.h6
 ♞a1+ 1-0

Polgar lost on time.

J.L. Hammer - M. Carlsen

At the press conference before the tournament Carlsen got the question whether it's possible for him to lose against Hammer. He answered that he now celebrates 10 years without losing against Hammer.

1.d4 ♟f6 2.c4 c5 3.♟f3

3.d5 is the main move.

3...cxd4 4.♟xd4 b6

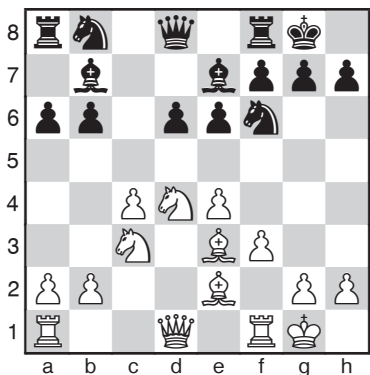
Carlsen chooses to play the hedgehog, where black places most of his pawns at the sixth rank. Ulf Andersson and others started to play this system decades ago, and it has been considered as a good system since.

5.♟c3 ♙b7 6.f3 e6 7.e4 d6 8.♙e2 a6

9.0-0 ♙e7 10.♙e3 0-0

Both players have developed their pieces to the best squares. Black usually continues with ♟bd7, ♞c7, ♞fe8, ♞ac8 and ♞b8. Then he transfers the bishop on e7 to either g7 or c7. In the long run black wants to break with b6–b5 or d6–d5, but he has a very solid position and can also just wait. Hammer's plan is to gain more space on the queenside. Ideally b4, ♟b3 and a4–a5 is played, but normally white has to take it very easy not to allow b6–b5 or d6–d5. Moves like ♙h1, ♙g1 and ♙f1 is also on the agenda, just to get the bishops out of the possible

rook files. The game Anand–Ilescas Cordoba 1992, which was commented in Informator # 54, is a good illustration of white’s play.



11. ♖c2 ♜c7 12. ♜f1 ♝c8

Carlsen brings the king’s rook to c8, which probably means that he tries for b6–b5 more than d6–d5.

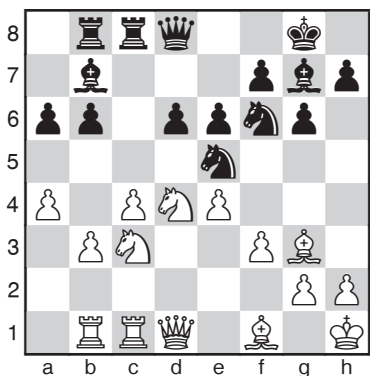
13. ♙f2 ♜bd7 14. a4 ♜ab8 15. ♖d1

15. a5 bxa5 16. ♜b3 is one of the white plans, but here black can break with 16... d5!

15... ♖d8 16. ♙h1

16. a5 bxa5 17. ♜b3 is better now, since 17... d5 loses a pawn.

16... ♙f8 17. ♙f1 g6 18. ♜ab1 ♜e5 19. b3 ♙g7 20. ♙g3

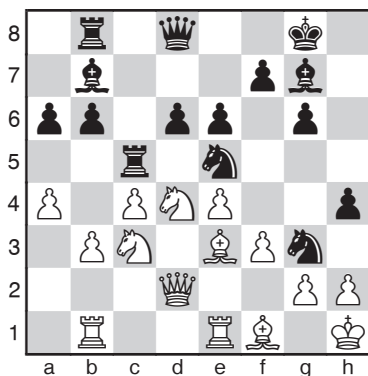


20...h5

Black often advances with the h–pawn in the hedgehog. Johan Hellsten has written a book about the Kan (1. e4 c5 2. ♘f3 e6 3. d4 cxd4 4. ♜xd4 a6) where hedgehog–positions can arise. He recommends black to advance with the h–pawn in almost every situation. If it get lost, black should get enough counterplay with a pawn break in the centre.

21. ♖d2 h4! 22. ♙f4

22. ♙xh4 ♜xc4! was Carlsens idea. Now white is worse in every line: 23. ♜xe4 ♖xh4 24. ♜xd6 ♜d8 and white loses one of the knights, 23. ♙xd8 ♜xd2 loses material. 23. ♖e1 is white’s best move, but here black has just managed to open the long diagonal for the bishop on b7. Both 23... ♜f6 and 23... ♙f6 are possible. 22... ♝c5!? 23. ♖e1 ♜h5 24. ♙e3 ♜g3+



25. ♙g1

Hammer trusts the calculation of the world’s number one, but this is a concession. The norwegian grandmaster Jonathan Tisdall has written a chapter in his book ⇔Improve Your Chess Now’ about the important role of white’s light squared bishop. I guess that both Hammer and Carlsen has read this chapter. 25. hxg3 is of course

critical. 25...hxg3 26.♔g1 ♖h4 27.♗d3
 ♜xd3 28.♗xd3 ♖h5 shows a point with
 22...♗c5. After 29.♔f1 ♖h1+ 30.♗g1
 ♖h2 31.♗c2 black also want the other
 rook to join, ♖b8–c8–c5 prepares
 ♗xg1+!, ♔xg1 ♖ch5 with mate. Now
 31...♗c8 can be met with 32.b4! ,
 stopping the rook manouver. Therefore
 27...♖bc8!? might be an interesting
 move, threatening 28...♜xd3 followed by
 29...♖h5. Or maybe even 26...♖h5!?

25...♜xf1 26.♗xf1 h3!

The h–pawn has reached h3, which
 weakens the position of Hammer’s king.
27.♜de2 hxg2 28.♔xg2 ♖c6
 Black is just better here, preparing f7–f5
 or d7–d5 later.

29.♖bd1 ♗a8 30.♗g5 ♗f8

The queen is well placed preparing f5.
31.h4!

Hammer doesn’t wait for his opponent’s
 regrouping, but plays active.

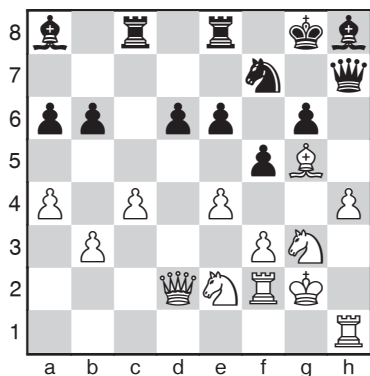
31...♗e8 32.♜g3

h4–h5 is next move.

**32...f6 33.♗e3 ♗f7 34.♗h6 ♗h8 35.♗e3
 f5 36.♗g5 ♖h7 37.♗f2 ♜f7**

Black now defends d6 and frees the rook
 on c6. ♖c6–c8 will open the diagonal for
 the bishop on a8.

38.♖h1 ♖cc8 39.♜ce2



39...♗e5

When Hammer retreated with the knight
 from c3 it seems to be a good moment to
 play 39...d5!

40.♗f4 fxg4 41.♜xe4 ♗xe4

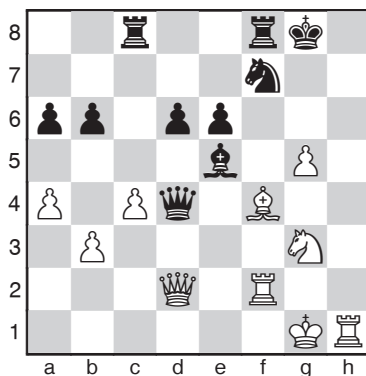
In this moment Carlsen didn’t have much
 time left. ♗xe4 gives up his best piece
 without gaining enough compensation.
 Probably Carlsen miscalculated the
 upcoming position. 41...d5 is the best
 move. 42.cxd5 exd5 43.♜g5 ♗g7 and
 black will play d5–d4 with pressure
 along the diagonal.

42.fxg4 g5 43.hxg5 ♗xe4+ 44.♔g1

The white king is actually quite safe,
 while the rooks prepares to attack the
 black king.

44...♖f8 45.♜g3 ♗d4?

It was forced to retreat with 45...♗g6.



46.♗c2!

Suddenly black has no defence against
 ♗h7+.

46...♜xg5

Carlsen had to sacrifice a piece to get
 the f7–square for the king. 46...♖fe8 is
 met by 47.♖h7+ ♔f8 48.♗xc5 ♗xc5
 49.♖xf7#

47.♗g6+ ♗g7 48.♗xg5 ♖f7

Hammer had blown many promising
 position in this tournament. This time

he had a lot of time left. After several minutes of thought he continued to play active.

49. ♖g6 ♜cc7 50. ♖g2

Defending against ♜xf4.

50... ♜xf4?

Losing instantly but it was lost anyway.

51. ♖h7+ ♖f7 52. ♜xf4+ ♖xf4 53. ♜f1

♖xf1+ 54. ♖xf1 ♜c5 55. ♖e4 1-0

J. Polgar - J.L. Hammer

1.e4 e5 2. ♖f3 ♖c6 3. ♗b5 ♖f6

Hammer: We developed our pieces.

4. ♖c3

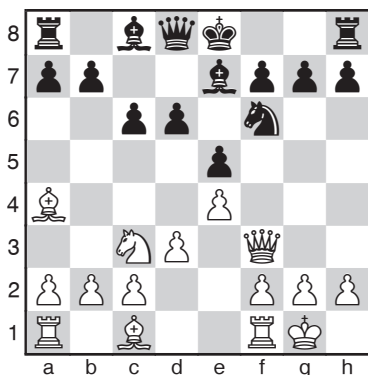
Polgar: Black wanted to go to the berliner again. I chose this time the four knights.

I thought it's a good idea in the last game to try to make it a little bit more complicated. Usually I try to steer the games in directions I feel comfortable and in direction where my opponent doesn't feel comfortable.

4... ♖d4 5. ♗a4 ♖xf3+

Hammer: I mean, black aims to get the pieces out, and at the same time white has not so much control over the d4-square.

6. ♖xf3 c6 7. 0-0 d6 8. d3 ♗e7



9. ♖d5

Hammer: This is the only way that white

can try to get some advantage.

9... ♖h6

Polgar: I 9... ♖xd5 10. exd5 b5 11. dxc6 bxa4 12. c7 wins an exchange. I thought probably after 9... 0-0 I will take on e7.

10. ♖xc7+ ♖xc7 and play 11. ♗g5 Then I take on f6 and play f4. There I have a nice position, but an advantage is too much to say

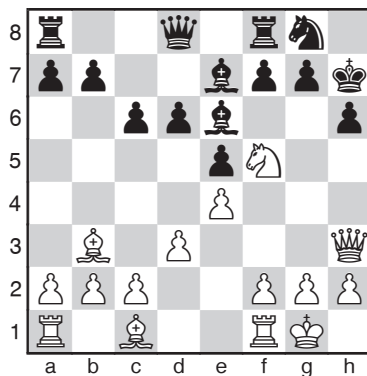
10. ♖e3

Hammer: I think 10. ♖xc7 is better than what she played, but I guess its another taste.

10... 0-0 11. ♗b3 ♗e6 12. ♖f5

Hammer: When you play Judit Polgar you don't like to have your opponents knight so close to your king. I thought I was worse, but I thought I could manage.

12... ♖h7 13. ♖h3 ♖g8



14. ♗d2

Polgar: Here maybe 14. ♖e1 was better, to make something against d5.

14... d5

Hammer: After d5 I think that I am fine.

15. ♖f3 a5 16. exd5

Polgar: I think that exd5 is a bad move. I thought I will get some fast attack against e5 but that was not the case. Actually here I should maybe go c3 or a4. I don't know if white is better, but definitely these are better moves.

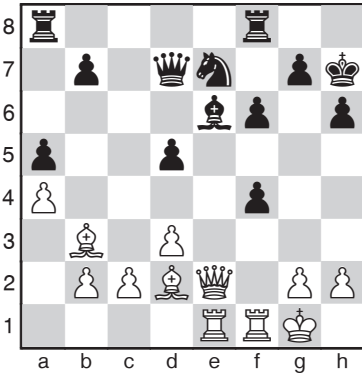
16...cxd5 17.a4 ♖d7 18.♗xe7 ♗xe7

Hammer: I like my centere Polgar: And black is very active.

19.♖e2 f6

Hammer: I thought about going ♗c6 and g5. I was thinking what pawnstructure I want. In this position white wants to play f4, so you think, what can I do to stop this. Black is for sure better. Polgar: Yes, probably ♗c6 anyway, then maybe f5.

20.f4 exf4 21.♖ae1



21...♖a6

Hammer: This move is sort of lucky. To be honest I wasn't sure about the position, there are bigger authorities than me here :-)

22.♗xf4 ♗g6 23.♗g3 ♗f7 24.d4 ♖aa8

25.c3 ♖fe8 26.♖f3

Polgar: Actually I was very happy and very optimistic, white is clearly better here. Maybe I should go 26.♖b5 immediately. Here I just started to misplay.

26...♗g8 27.♗c2 ♗f8 28.♗b3 ♖c6

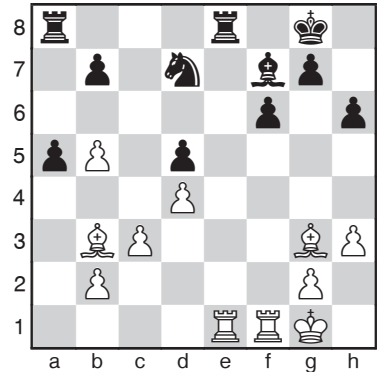
Hammer: I think I could have played a bit more aggressive. b5, or also ♗h7, try to play ♗g5. At this point I just felt I lost control over the position. I had a good game and now I am just worse. We were approaching time trouble, so I thought I

should just make some quick moves.

29.h3 ♖ad8 30.♖d3 ♖a8 31.♖b5

Polgar: Maybe I should have played 31.♖xe8 ♖xe8 32.♖b5

31...♖xb5 32.axb5 ♗d7



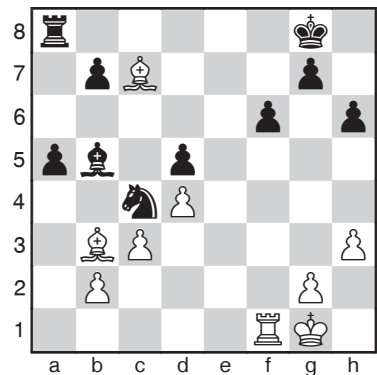
33.♗c2

Polgar: Here obviously I have to go 33.♗c7 It might threaten b6, so black has to play 33...b6 Hammer: If I have to play b6 it's no good.

33...♗b6

Polgar: Now I should just look for a draw I think.

34.♗c7 ♗c4 35.♖xe8+ ♗xe8 36.♗b3 ♗xb5



37.♖f5

Hammer: This is a critical position, so

I felt I should use the time I had left. I didn't really succeed to find anything. I was trying to play 37...♖e3. Also I looked at 37...a4

37...♙c6 38.♙xc4 dxc4 39.♞xa5 ♞xa5 40.♙xa5 ♔f7

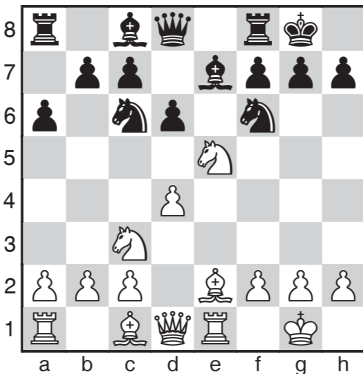
Hammer: We can make the moves instantly, so playing the position will only take two more minutes. My only winning chance is some earthquake hitting. The earthquake may push the bishop to a dark square.

41.♔f2 ♕e6 42.h4 ♔f5 43.g3 ♕e4 44.♙b4 h5 45.♙f8 g5 46.hxg5 fxg5 47.♙e7 ♔f5 48.♙d8 ♔g4 49.♙e7 ♙d5 50.♙d8 h4 51.gxh4 gxh4 52.♙c7 ♔f5 53.♔e3 ♔g4 54.♔f2 ♔f5 55.♔e3 ♔g4 1/2-1/2

M. Carlsen - V. Anand

Anand: The game was not so interesting, but okay, it had its moments.

1.e4 e5 2.♖f3 ♖c6 3.♙b5 ♖f6 4.0-0 ♖xe4 5.♞e1 ♖f6 6.♖xe5 ♙e7 7.d4 0-0 8.♖c3 a6 9.♙e2 d6



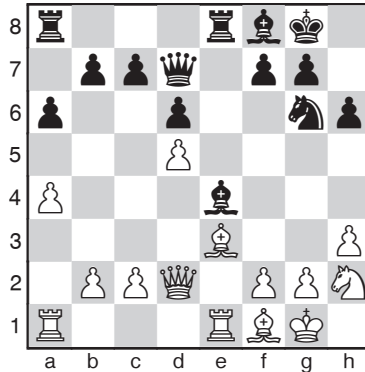
10.♖f3

Anand: Taking on c6, 10.♖xc6 shouldn't be much, but white can try for something there.

10...♞e8 11.♙f4

Anand: Well, there are some dangerous things even here. Black should avoid to become more passive.

11...♙f8 12.♞d2 h6 13.h3 ♙f5 14.d5 ♖e7 15.a4 ♞d7 16.♙f1 ♖g6 17.♙e3 ♖e4 18.♖xe4 ♙xe4 19.♖h2



19...♖h4

Anand: What white is aiming for is the clamp a5-b4-c4. All endings are won, all pawn endings. But I think white is not really in time, as long as I have major pieces. I try to swap rooks. When he went 19.♖h2, I thought that ♖h4 is important. Maybe 19...♖e7 is just better. Carlsen: Actually I thought I might take on h6 after ♖e7.

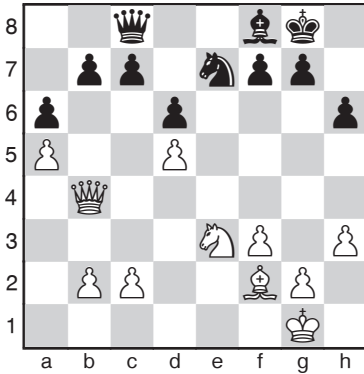
20.f3 ♙h7 21.♙f2

Anand: After 21.c4 I go 21...♖f5 22.♙f2 ♞xe1 and he can not take with the rook. No big deal, but a small detail.

21...♖g6

Anand: I think it is important not to drift. It is easy to make 10 moves thinking that nothing happens. Instead black should play ♖c7 and c6 quickly before anything happens.

22.a5 ♞xe1 23.♞xe1 ♞e8 24.♞xe8 ♞xe8 25.♞b4 ♞c8 26.♙d3 ♖e7 27.♙xh7+ ♖xh7 28.♖f1 ♖g8 29.♖e3



Carlsen: The white king is not weak. For anything to happen, black would at least need to get the bishop to e7–g5, and even if he succeeds, it doesn't seem to be anything happening on the dark squares.

29...c6 30.dxc6

Anand: Maybe 30.c4. Carlsen: I thought d5 would be weak. Maybe h5 and g6.

Anand: It could be.

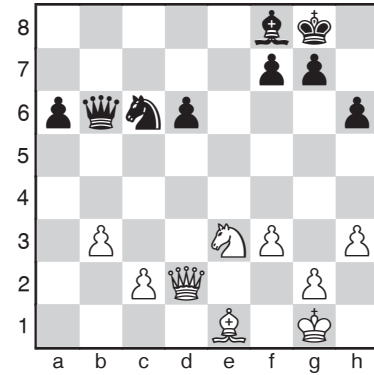
30...dxc6 31.♖d2

Anand: The pawn on d6 is not really weak, only visually.

31...♗d8 32.♕e1

Anand: I think the issue is not that the d6–pawn is not weak, but that black is still somewhat passive. There are something with the clamp still. If white plays b4 and c5, then it's serious. 32.♕e1 is nice, because he wants to play ♘d5. I have to play b6. Black's idea is the same as in Sveshnikov. He has two weak pawns, and he tries to swap one of them. 32.♘c4 is interesting., but not 32.b4 d5 and black exchanges the pawns. Carlsen: There I really need to work not to be worse.

32...b6 33.axb6 ♖xb6 34.b3



34...a5

Anand: If white wins the pawn on a5, but gets a lot of pieces there, then the king might get weak. At least perpetual. If the pawn were on f2, I wouldn't have played like this. Maybe 34...d5 here.

35.♕f2 ♗a6

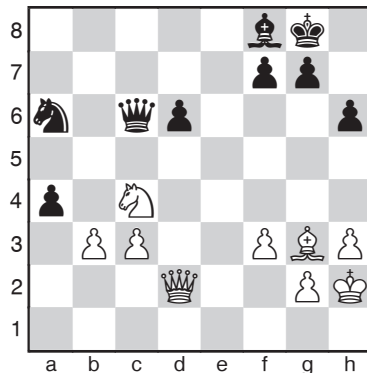
Anand: I was not very happy, black has to play some defensive moves. I want to exchange one of the pawns. more likely the a–pawn.

36.♕g3 ♘b4 37.♖h2 ♖c6 38.c3

Anand: Maybe 38.h4, just waiting.;

Carlsen: I think I would have played 38.c4 here. But I don't see what my next move is.

38...♘a6 39.♘c4 a4



40. ♖a2

Anand: The critical question is on move 40, if white has something. 40. ♖a5 ♗b5 41. c4 ♗b6 (41... ♗c5 doesn't equalize.) 42. bxa4 ♖c5 43. ♕f2 ♕c7 Carlsen: I don't know what my next move is there. Anand: If he takes ♕xc5, dxc5, white's king is in danger of a perpetual.

40...axb3 ½-½



Schedule for the last day

Viswanathan Anand (5) and Magnus Carlsen (3½) qualified for the final. Jon Ludvig Hammer (2) and Judit Polgar play each other in the bronze final.

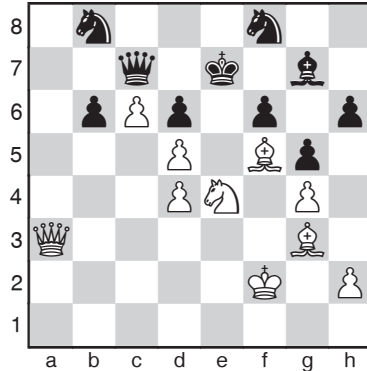
There will be played two games.

14.00 Carlsen–Anand & Polgar–Hammer

15.40 Anand–Carlsen & Hammer–Polgar

Welcome to Caroline Kino!

Alex. Flaata - K-Å Andersson



	1	2	3	4	5	6
GM Judit Polgar	0 ¹	0 ²³	½ ⁴	½ ²	0	½ ³
GM Viswanathan Anand	1 ³¹	1	½ ⁴³	1	1 ¹⁴	½
GM Jon Ludvig Hammer	0 ²	0 ⁴	½ ¹	0 ²	1 ⁴¹	½
GM Magnus Carlsen	1 ¹	1 ³²	½	½ ¹³	0	½ ²



Kristiansund kommune
I medvind sansett vær



Best games

Tiger Hillarp - K T Sandum

1.♞f3 d5 2.g3

Not as innocent as it looks.

2...♘f6 3.♙g2 e6

There are a lot of other options, but black chooses to enter the closed catalan.

4.0-0 ♙e7 5.c4 0-0

5...d4?! is what white plays in similar positions with reversed colours, but here it is really too optimistic, since black also have to play e6-e5 in two moves.

6.d4 b6

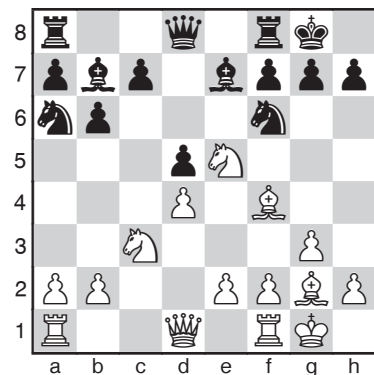
6...c6 is the main move.

7.cxd5!

The best move.

7...exd5 8.♞c3

This position can also arise from the queens indian, but there white has played a3, b3 or ♖e1. Now he can play more useful moves than one of these. 8...♙b7 9.♙f4 ♞a6 10.♞c5



10...c6?!

The point with 6...b6 was to manage

without the move c7-c6. The most logical follow up was definitely 10...c5 Black will get hanging pawns on c5 and d5, which white will try to attack.

11.♞c1 ♞d7

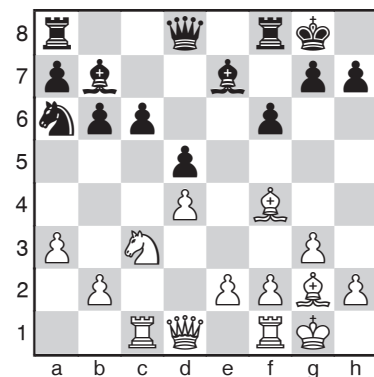
11...♞c7 12.♞xc6! was a nice shot both players noticed during the game.

12...♙xc6 13.♙xc7 ♞xc7 14.♞xd5 and white will be two pawns up.

12.a3

There are some ideas with this move, for example to stop ♞b4 and to prepare b2-b4. Hillarp should probably have played more active.

12...♞xe5 13.♙xe5 f6 14.♙f4



14...g5!

Sandum usually plays unnecessary passive, but here he does the opposite.

14...♙d6 was the alternative.

15.♙d2 f5

Black's last three pawn moves has forced ♙d2 back and stopped e2-e4.

16.♞a2 ♔g7 17.♞a4

White starts to attack against the half open file.

17...♞e8 18.♞c2 h5 19.♞c1

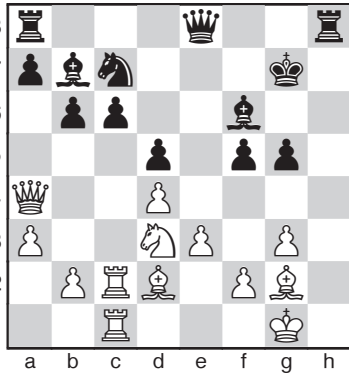
Heading for e5.

19...♙f6 20.e3 ♞h8 21.♞d3 h4 22.♞fc1

White threatens to sacrifice on c6,

because the knight on a6 will be in great trouble.

22...hxg3 23.hxg3 ♖c7



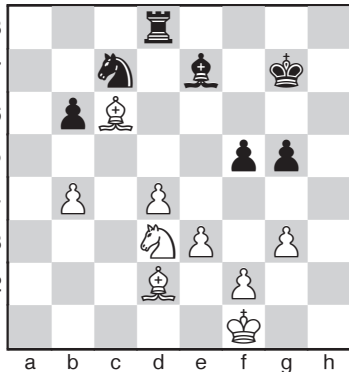
24.♖xc6!?

Hillarp is famous for his exchange sacrifices. 24.♖b4 was the most logical move in the position. Hillarps move might be okay, but it's hard to understand why he plays it.

24...♗xc6 25.♖xc6 ♖xc6 26.♖xc6 ♖ac8 27.♖b4 ♖hd8 28.♗f1 a5

Since this forces the knight to the corner next move, black should probably think twice before playing it.

29.♖d3 ♖a8 30.♗xd5 ♖xc6 31.♗xc6 ♖c7 32.b4 axb4 33.axb4 ♗e7



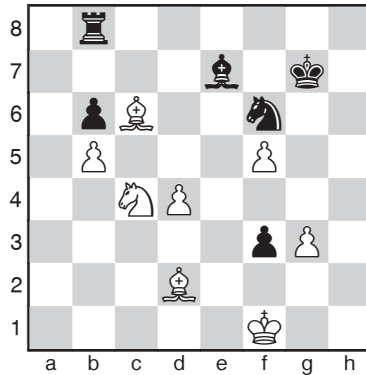
34.b5

White has a good position. The rook needs open files, and there are two – the a-file and the h-file. The bishop on c6 defends the important squares on both files – a8 and h1.

34...♖d5 35.♖e5 ♖f6 36.♖c4 ♖b8 37.f3 g4!

White can still improve his position a lot, and Sandum tries to create play before white has full control.

38.e4 gxf3 39.exf5



39...Resigns?? 1-0

Sandum felt that he started to lose control, but there were only two moves to the time control. After 39...♖d8 white is only slightly better, at best.

Nils Grandelius - T. Hillarp

1.e4 d6 2.d4 ♖f6 3.♖c3 g6 4.f4 ♗g7 5.♖f3 c5

If black avoids the check with 5...0-0 white has 6.♗d3 c5 7.dxc5

6.♗b5+ ♗d7 7.♗xd7+ ♖bxd7

7...♖fxd7 is the main move.

8.e5?!

8.d5 is correct.

8...♖h5! 9.e6

9.g4 ♖xf4 10.♗xf4 cxd4 11.♖c4 dxc5

leaves black with excellent compensation.

9...fxe6 10.♖g5 ♗xd4 11.♜xe6 ♗xc3+
12.bxc3

Grandelius has the dark squared bishop and a knight on e6 as compensation, but it's not enough.

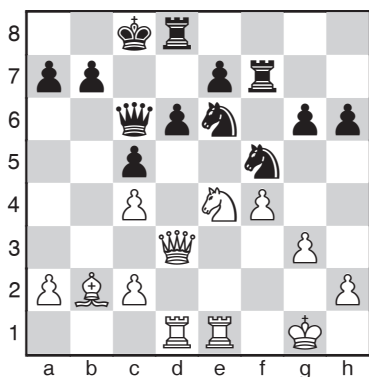
12...♞c8 13.0-0 ♜f8 14.♜g5 h6 15.♜e4
♞c6 16.♞e1

Grandelius plan was to play fast and hope for time trouble.

16...0-0-0 17.c4 ♞h7!

Defending the pawn on e7 the best way.

18.g3 ♜g7 19.♗b2 ♜f5 20.♞d3 ♜e6
21.♞ad1 ♞f7



22.♜d2

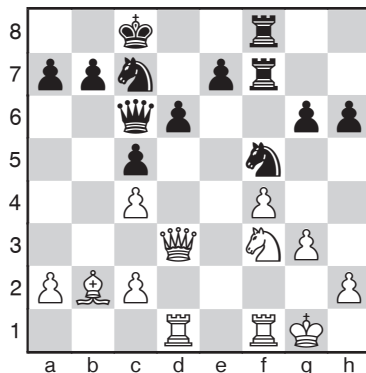
22.♜xd6+!! is a fantastic combination which wins back the pawn. 22...♞xd6

23.♞xc6!

22...♜c7 23.♜f3 ♞df8

Better was 23...♞g8 to prepare g5.

24.♞f1



24...g5? 25.fxg5 ♜xg3 26.hxg3 ♞xf3
27.gxh6!

The move Tiger had missed.

27...♜d7

27...♞xd3 28.♞xf8+ ♜d7 29.cxd3 and the h-pawn promotes.

28.♞xf3 ♞xf3 29.♞g6 1-0

Final standings Kristiansund Grand Prix group A

1	GM	Emanuel Berg	0	2612	Burgsvik Alva SK	5
2	GM	Vladimir Georgiev	0	2586		5
3	GM	Evgeny Romanov	0	2590		5
4	GM	Nils Grandelius	0	2505	Lunds ASK	4½
5	GM	Tiger Hillarp Persson	0	2538	Lunds ASK	4½
6		Matti Svern	0	2214	SK Kamraterna	4½
7		Nils-Åke Malmdin	0	2297	Sundsvalls SS	4½
8	FM	Joachim Thomassen	2307	2364	Moss	4
9		Lars Madebrink	0	2247	SK Kamraterna	4
10		Johan Salomon	1621	1770	Nordstrand	4

11		Aryan Tari	1938	2060	Asker	4
12		Gudmund Stenersen	2201	2213	SOSS	4
13	GM	Alexandra Kosteniuk	0	2519		4
14		Thomas Thomassen	1952	2055	Stavanger	4
15		Tore Kolås	2123	2222	Trondheim	3½
16		Tor Wetle Hoem	1831	1968	Kristiansund	3½
17		Anders Olsen	2007	2076	Kristiansund	3½
18		Alexander R. Flaata	1992	2070	Black Knights	3½
19		Remi Picard	0	2081	Migne Echecs	3½
20		Stein Jensen	1909	2063	Harstad	3
21		Brede Andre Larsen Hagen	1860	2064	TSSK	3
22		Björn Särén	1972	0	Karlstad AS	3
23		Håkon Bentsen	2054	2151	Molde	3
24		Sebastian Mihajlov	1725	1878	OSS	3
25		Roar E. Nakken	1881	2120	Aalesunds	3
26		Rune Normann	1547	0	Trondheim	3
27		Kjell T Sandum	1922	2053	Kristiansund	3
28		Armin Gholami	1640	1836	OSS	3
29		Ellif Odde	1975	0	Kristiansund	3
30		Lars Oskar Hauge	1797	1916	OSS	3
31		Johannes Haug	1442	1640	Nordstrand	3
32		Kurt Magnus Berg	1788	0	Harstad	2½
33		Håvard Ramstad	1699	0	Aalesunds	2½
34		Emil-Lion Nomat	1580	1826	Aalesunds	2½
35		Ove H Harestad	1591	1775	Randaberg	2½
36		Helge Storeide	1573	0	Aalesunds	2½
37		Oddmund Sande	1839	2028	Randaberg	2
38		Frode Høva	1549	1753	Follo	2
39		Stig Sætre	1518	0	Aalesunds	2
40		Vegard Simensen	1544	0	Kristiansund	2
41		Havard Bjerkevik	1721	0	Volda Ørsta	2
42		Egil A Standal Volda	1682	1863	Ørsta	2
42		Arne Morten Kästel	1467	0	Molde	2
44		Rich. Wicklund-Hansen	1789	1891	OSS	1½
45		Anders Samuelsen Nordli	1558	1568	Trondheimstud	1½
46		Kjell-Åke Andersson	1939	0	Karlstad AS	1½
47		Per-Chr. Stenvaag	1592	0	Aalesund	1½
48		Fardin Toback	0	0	Kristiansund	1½
49		Ole Reza Drønen	1409	0	Aalesund	1
50		Gunnar Bolsø	1505	0	Aalesunds	½

Final standings Kristiansund Grand Prix group B

1	Øyvind Hoem Vaseng	1042	Kristiansund	5
2	Olav Skjetnemark	1316	Namsos	5
3	Mats Peter Henøen	1151	Kristiansund	5
4	Henrik Øie Løbersli	0	Kristiansund	4½
5	Øystein Iversen	1308	Trondheim	4
6	Rune Øistein Aas	1331	Trondheimstud	4
7	Tore Høe Løvaas	1430	Trondheim	4
8	Anders Stanghelle	1142	Nord-Odal	4
9	Jan Erik Skog	1388	Aalesunds	4
10	Cornelius Kvendseth	878	Nordstrand	3½
11	Audun Hoem	1123	Kristiansund	3½
12	Bjørn Noralf Dybvik	1165	Aalesunds	3½
13	Jonar Lensebakken	1152	Nord-Odal	3
14	Jon Oddvar Rambjør	0	Kristiansund	3
15	Martin Skog	982	Aalesunds	3
16	Arman K Ghaderi	1072	Trondheim	3
17	Per Magnus Larsen	877	Porsgrunn	3
18	Robert Hansen	0		3
19	Iver Halse	0	Kristiansund	3
20	Øystein Halse	746	Kristiansund	3
21	Elise Sjøttem Jacobsen	659	Tromsø	2½
22	Aleksey Gorskiy	0	Kristiansund	2½
23	Hans-Henry Jacobsen	1204	Tromsø	2
24	Eli Marit Ødegaard	0	Kristiansund	2
25	Emil Andre Olsen	0	Kristiansund	2
26	Stian Paulen	1004	Volda Ørsta	2
27	Magnus D. Jensen	0	Kristiansund	2
28	Erling Nybø	829	Aalesunds	2
29	Vegard Kallset	0	Kristiansund	2
30	Paul Ivar Johansen	753	Trondheim	1½
31	Ian Olners Kjenne	0		1½