

Bulletin

Kristiansund Grand Prix & Arctic Securities Chess Stars



Nr 2	2010-08-28	Price: 5 NOK
Interview: Vladimir Georgiev		2
Arctic Securities Chess Stars		3
Best game of day two		4
Selection of games		6
Standings Kristiansund Grand Prix		13
Curiosities		15
Daily problem		16

Interview



GM Vladimir Georgiev 1st place 2009

You have birthday today. Congratulations!

Thank you!

How was your game today?

It was not good. I had a big advantage and refused draw, but I lost.

Do you like Norway?

Yes. It's very clean, and it's a lot of mountains and lakes. I like water. I was in Oslo in one week before this tournament.

What do you think about the tournament?

I like the place! And I like the tournament, I like the people. I was here last year, and I hope to come back next year, and the year after that... It's very nice here.

How much do you travel every year?

Nobody knows! But it's a lot. I have been to more than 50 countries. I like traveling, make new friends, and come back to places I like.

In your opinion, who is the favourite in the rapid tournament?

Maybe Carlsen. For chess it's better if he wins here in Norway. But actually, it doesn't matter, it will be a great tournament anyway. Number one against the world champion!

The world champions
Magnus Carlsen vs. Visy Anand

live at Caroline Theater

Saturday 28 August - Monday 30 August 2010



We can also proudly present two other star players; **Jon Ludvig Hammer** (Norwegian player on the rise) and **Judit Polgar** (the world's best female chess player)

Saturday

13:30
14:30

Ticket sale opens to the public. (Please be early - 250 ex tickets are already pre-sold)
First match begins

Sunday

14:30

First match begins

Monday

14:00
15:40

First match final and bronze final
Second match final and bronze final

Rapid chess:

Players have 20 minutes each and 10 minutes extra per move. 6 matches, double rounds.

TV big screen:

The finals will also be shown in a separate room at the Caroline Theater
Commentary by International Master Torstein Bae

Ticket prices:

200 NOK per day



ARCTIC SECURITIES

Best game

Thomas Thomassen - Tore Kolås

1.c4 ♘f6 2.g3

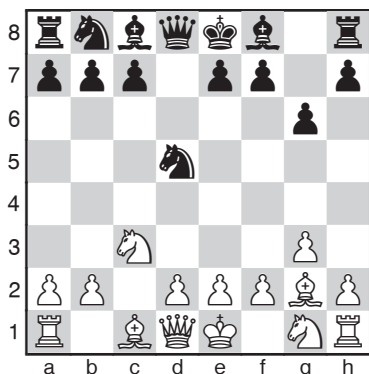
Normally white plays g2–g3 after black has played e7–e6. Therefore it's possible to argue that black should play 2...c6, 3...d5 and 4...♙f5 or 4...♙g4 here, but that positions is not to everyones taste.

2...g6 3.♙g2 d5

3...♙g7 can be met by 4.e4 and a Grunfeld is not longer possible.

4.cxd5 ♘xd5 5.♘c3

White gets a preferable Grunfeld, because the knight is not on f3 yet, and black thus has to react to the threat against d5.



5...♘b6

5...♘xc3 6.bxc3 ♙g7 7.♙b1! shows another point with dealyng ♘f3. White is not threatening 8.♙xb7 here due to 8...♙xb7 9.♙xb7 ♙d5, but he is threatening 8.♙xb7! Black is forced to play the slightly passive 7...♘d7

6.♘f3 ♙g7 7.0-0 ♘c6

7...c5 is another option.

8.d3

White has an extra pawn in the centre, but he doesn't advance it yet. Instead white will play for the c5–square with ♙c3, ♙c1 and ♘e4–c5.

8...0-0 9.♙c3 e5 10.♙d2

With the positional threat of ♙h6.

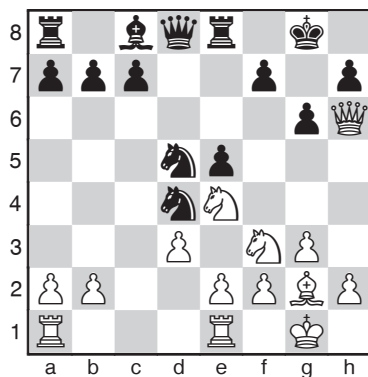
10...♙e8 11.♘e4

It seems more accurate to play 11.♙h6 immediately, avoiding the threat against the pawn on e2.

11...♘d4 12.♙fe1

This move is probably to prepare ♙h6, which doesn't work now because of 12...♙xh6 and 13...♘xe2+

12...♘d5 13.♙h6 ♙xh6 14.♙xh6



14...♘c2??

Kolås is always up for a fight, but this time he is playing with the fire. 14...♘f5! 15.♙d2 and white is slightly better due to the fianchetto bishop and sound pawn structure.

15.♘fg5! ♘f6 16.♙ac1

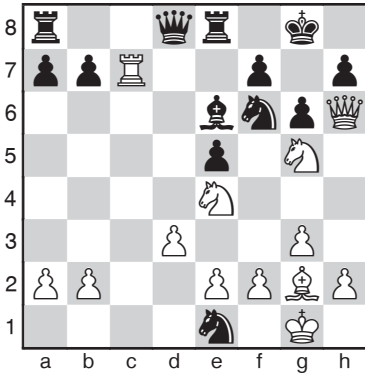
16.♘xf6+ ♙xf6 17.♙d5 ♙c6 18.♙xc6

fxe6 19. ♖ac1 ♜xe1 20. ♖xh7+ ♔f8
21. ♖xc7 is the most convincing line.

16... ♜xe1 17. ♖xc7

This threatens ♖xf7 and seems highly promising, but black has a defence.

17... ♗e6



18. ♗h3!

Trying to deflect the bishop on e6.

18... ♗d5

Only move, 18... ♗xh3 19. ♖xf7 is mating.

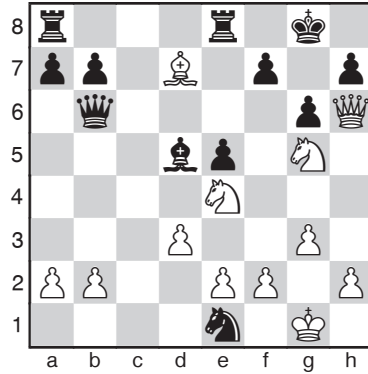
This is an amazing position. What can black do next? If he moves ♔g8, ♜f6, ♖e8 or ♗d8 he is mated. ♗d5 must stay where it is to defend f7 and be ready to capture on e4. ♜e1 is trapped and ♖a8 can only move to b8. In a position like this, it's not easy to stop and think about your opponent's active plan.

White is free to do whatever he wishes! Thomassen choses to play straight forward, which is also a good option.

19. ♗d7!? ♜xd7 20. ♗xd7

White is threatening 21. ♗xc8 and the rook can't move. The queen must continue to defend against ♜f6+. Since 20... ♖e7 is met by 21. ♖xh7 ♔f8 22. ♖h8 mate the only remaining move is...

20... ♖b6

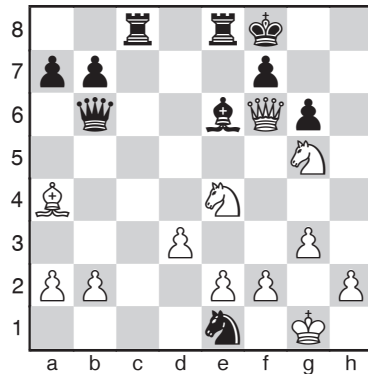


21. ♗a4

The idea with this move was that the bishop was hanging after 21. ♖xh7+ ♔f8 22. ♖h8+ ♔e7 23. ♖e5+, 21. ♗e6!! blocks both the sixth rank and the d5–f7–diagonal. Black threatens both 22. ♜f6+ and 22. ♖xh7+. Black can't defend against both. 21... ♖xe6

**21... ♖ac8 22. ♖xh7+ ♔f8 23. ♖h8+ ♔e7
24. ♖xe5+ ♗e6 25. ♖f6+ ♔f8**

Just like in first round, Kolås has extreme time trouble. Again he survived. The position still looks promising for white, but there is no winning line anymore.



**26. ♖h8+ ♔e7 27. ♖f6+ ♔f8 28. ♖h8+
½-½**

Selection of games

Anders S. Nordli - Brede Hagen

1.e4 e5 2.♘f3 ♘c6 3.d4 exd4 4.♘xd4 ♘f6 5.♘c3

5...♘xc6 bxc6 6.e5 is the mainline.

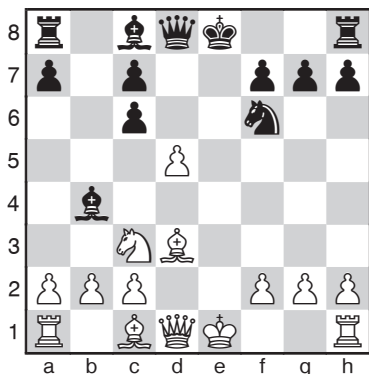
5...♘b4

Threatening to take on e4, and since white can't play ♘d3 for the moment he is forced to take on c6, thus strengthening black's centre.

6.♘xc6 bxc6 7.♘d3 d5

The direct consequence of 6...bxc6.

8.exd5



8...cxd5

The move order starting with 8...0-0 should also be possible, because 9.dxc6 ♜e8+ is promising for black.

9.0-0

9.♞e2+ with the idea of 9...♘e7 10.♘g5 0-0 11.0-0-0 is an extra option white gets after 8...cxd5.

9...0-0 10.♘g5 c6 11.♞e1?!

I don't like this move, self-pinning the knight on c3. Normal is 11.♞f3, when black can chose to either play 11...♘e7 or allow ♘xf6. Both is considered to be okay in both cases.

11...h6!

11...d4 12.♘e4! must have been white's idea, with the possible continuation 12...♘xe1? 13.♘xf6+ gxf6 14.♞h5 fxg5 15.♞xh7#

12.♘d2

12.♘h4 g5 allows d5-d4 next move.

12...♘d6!

The best diagonal for the bishop.

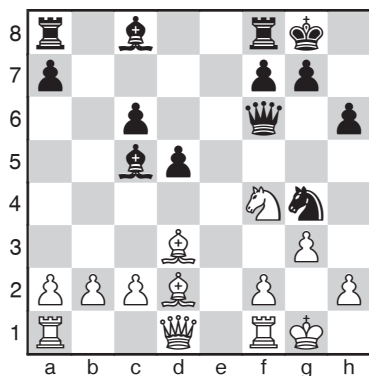
13.♘e2

Heading for f5, but it's still two moves away.

13...♘g4 14.g3

14.♘f4 ♞h4 15.♘xd6 ♞xf2+ 16.♔h1 ♘e3 wins for black, because of the two decisive threats on d1 and g2.

14...♘c5 15.♞f1 ♞f6 16.♘f4



So far Hagen has played very well and reached a promising position. The best is now probably to be satisfied with capturing the pawn on b2. Hagen tries for more.

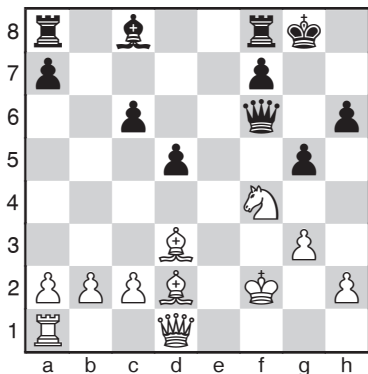
16...♘xf2+

16...♘xf2 17.♞xf2 g5 runs into 18.♔g2

♙xf2 19.♘h5! and white is winning.

17.♙xf2 ♘xf2 18.♙xf2 g5

Clever. Black will take on f4 and be an exchange up. It's not that easy...



19.♙h5! gx4 20.gxf4!

The threats along the c-file and the d3-h7, c3-h8 and d2-h6-diagonals are too much for black to handle.

20...♙h8 21.f5! ♙h7 22.♙xh6! ♙h8

22...♙xh6 23.f6+ checkmates in a few moves.

23.♙g1!

The most exact finish.

23...♙xh6 24.f6+ ♙f5 25.♙xf5# 1-0

E. Berg - Alexandra Kosteniuk

Emanuel has been faithful to 1.e4 his whole career, but recently he has played some games with 1.d4.

1.e4 e5 2.♘f3 ♘c6 3.♙b5 a6 4.♙a4 ♘f6 5.0-0 ♙e7 6.♙e1

White threatens to win a pawn with 7.♙xc6 and 8.♘xc5, so black has to weaken the queen side.

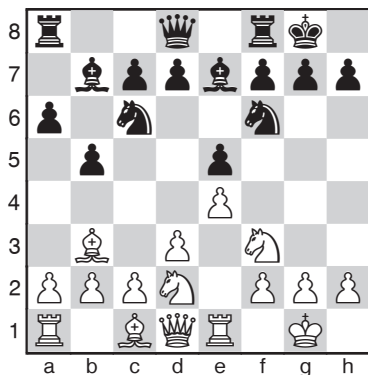
6...b5 7.♙b3 0-0

Kosteniuk invites to a Marshall gambit.

8.d3

8.h3 and 8.a4 is the two most common Anti-Marshalls. They have a lot of common with the line Berg plays. White doesn't play d4, but instead continues with the normal spanish manouvering ♘d2-f1-g3. White normally answers d7-d6 with c2-c3. Why? d6 defends the e5-pawn a second time and releases the knight. Black thus threatens ♘a5, exchanging the bishop on b3, and c2-c3 gives a square for retreat.

8...♙b7 9.♘bd2



9...♙c5

9...♙e8 is a good move, since 10.♘f1 is met by 10...♘a5! 11.♘xe5 ♘xb3 12.axb3 d5 with sufficient play. White can play 10.c3, but then black has managed to force this move without spending a tempo at d7-d6.

10.c3

It is too early to continue with the knight manouver: 10.♘f1 d5! 11.exd5 ♘xd5 12.♘xe5 ♙xf2+ 13.♙xf2 ♘xc5 14.♙xc5 ♙f6+ and black wins.

10...♙b6 11.h3

11.♘f1 is still met the same way.

11...h6 12.♘f1

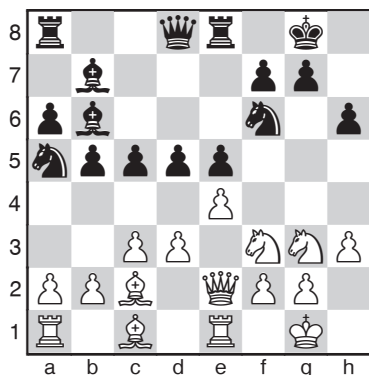
This allows d7-d5, but white has

difficulties to find another constructive plan.

12...d5 13.♖e2

Avoiding the exchange of queens..

13...♗e8 14.♘g3 ♘a5 15.♙c2 c5



Here white has two possible ways to continue, ♘f3–h4–f5 or ♘f3–h2–g4. Since 16.♘h4 loses a pawn to 16...♗xc4 only the latter remains. The idea with ♘h2–g4 is to be able to play hxg4, which increases white’s control over f5. Specially when h7–h6 is played this is an attractive plan, since a knight on f5 is difficult to chase away with g7–g6.

16.♘h2 c4!

Kosteniuk plays on her side of the board, the queen side.

17.♘g4 cxd3

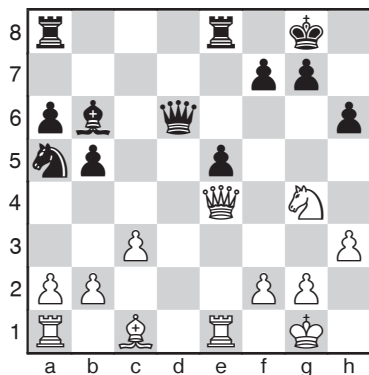
Exchanges everything before white’s pressure on the king side is too big.

18.♙xd3 dxe4 19.♘xe4 ♘xe4 20.♙xe4 ♙xe4 21.♖xe4

c5 is slightly weak, but the most important question in the position is whether Kosteniuk’s queen side is weak or not. Already at the 6th move we talked about this ⊕weakness⊞, and it still exists. The space advantage has an upside too. Ideally black would like to place the knight on c4, force b2–c3 and

then put pressure along the c–file.

21...♗d6



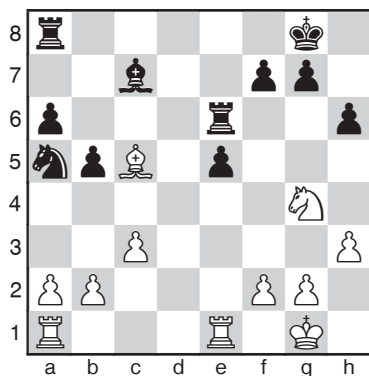
22.♙e3!

22.♘xe5 is not as bad as it looks, since 22...f6 can be met by 23.♗d3! Instead of winning the piece black has to increase the pressure, which will force white to take back on e1 with the knight. This is probably giving black enough compensation for the pawn.

22...♙c7!?

Kosteniuk want to keep the pieces, because in the endgame the weak queenside will have more importance. Black’s plan is now to play 23...♖e6 and 24...f5. Berg stops this with his next move.

23.♖f5! ♖e6 24.♖xe6 ♗xe6 25.♙c5



Evacuating e3 for the knight.

25...♖b7?!

This is just helping white. Better were 25...♗c4 with the strategic plan described after white's 21th move.

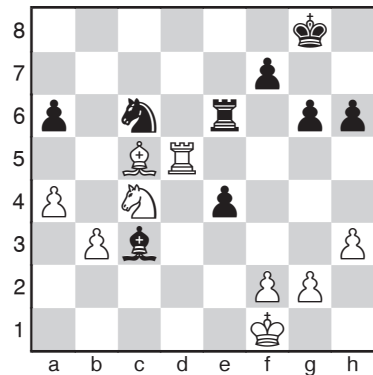
26.♙a3 e4 27.♞ad1 ♞d8 28.♞xd8+ ♙xd8

29.♞d1 ♙b6 30.♞d5 ♗a5 31.b3 ♗c6

31...♞c6 looks more logical to me. Now Berg slowly improves his position the next moves.

32.♔f1 ♙d8 33.♗e3 ♙f6 34.c4 bxc4

35.♗xc4 g6 36.♙c5 ♙g7 37.a4 ♙c3



38.♞d6?!

Berg was not happy with this decision after the game. He said that he should just have continued to improve the position slowly, with a clear advantage. I am quite impressed by 38.♞d6, since it works out very well for white in every line, but some of the nice points isn't shown until eight moves from this position.

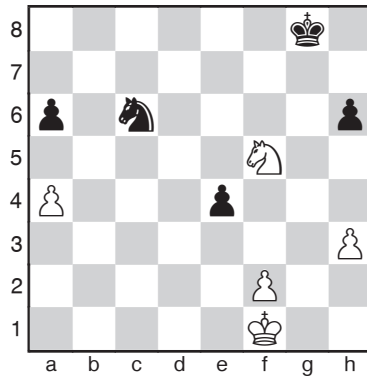
38...♞xd6 39.♗xd6 f5 40.g4 ♙d4

40...fxg4 41.hxg4 and the pawn on e4 is lost.; 40...♙c5 41.gxf5 ♙xd6 42.♙xd6 gxf5 and a position where the bishop will be very effective since it's play on both wings.

41.b4 ♙xc5 42.bxc5 ♗d4

42...♗e7 is the same.

43.gxf5 gxf5 44.c6 ♗xc6 45.♗xf5



This is the key position. Black can't avoid losing one of the pawns.

45...♔f7!

The best way of defending such endgames is as active as possible.

45...♔h7 46.♗g3 and the pawn on e4 is lost.

46.♗xh6+ ♔g6 47.♗g4 ♔g5 48.♔e2

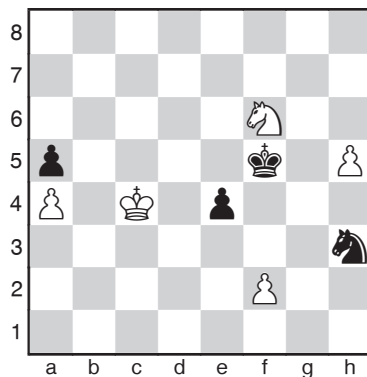
Here Emanuel had only some minutes for the rest of the game. It's an easy position to play, tough, since black has two serious weaknesses, e4 and a6. One of them was created already in move six...

48...♔f4 49.♔d2 ♗d4 50.♗f6 a5 51.♔c3

♗e6 52.♔c4 ♗g5 53.h4 ♗h3 54.h5?

54.♗xc4 analogous to the game was already possible.

54...♔f5?



54...♞xf2! 55.h6 e3 56.h7 e2 57.h8♞
e1 ♞ looks dangerous, with the queen
badly placed on e1, but white has no way
to win.

55.♞xe4!! ♞xe4 56.h6

The knight is specially bad against flank
pawns, and here white has two of them.
Berg was down to less than a minute for
the rest of the game, but he is very strong
with almost no time.

56...♞g5 57.♞b5 ♞f5

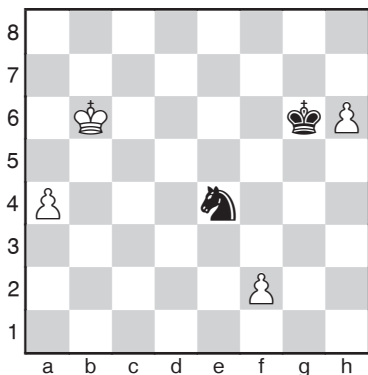
Now it's finally time to remove the
a-pawn from the board.

58.♞xa5 ♞g6 59.♞b6

Berg told me after the game that he had
calculated all lines to the end here. If the
black knight manages to stop the pawn
with ♞c8, ♞b5 or ♞b4, it's a draw, but it
isn't possible.

59...♞e4

59...♞f7 60.♞c7! was one of the lines.



60.♞c6!

The only winning move. 60.a5 ♞d6
draws, since the knight reaches c8 or b5.

60...♞xf2 61.a5 ♞d3 62.♞b5!

Again the only winning move.

62...♞xh6

62...♞f4 63.a6 ♞d5 64.a7 ♞c7+ 65.♞c6
♞a8 is no solid blockade.

63.a6

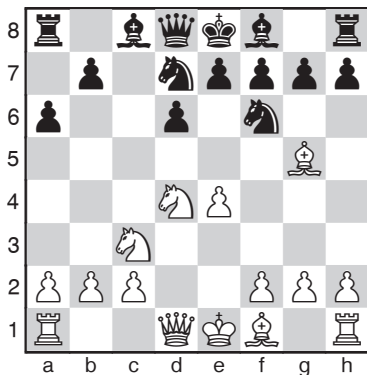
The rest is quite easy, and didn't take
Berg more than about 10 seconds.

**63...♞g5 64.a7 ♞f4 65.a8♞ ♞e3 66.♞c4
♞e5+ 67.♞d5 ♞f3 68.♞e8+ ♞f4 69.♞e6
♞d2 70.♞e2 ♞f3 71.♞f2 ♞g4 72.♞e4
♞g5+ 73.♞e3 ♞e6 74.♞f6 ♞g5 75.♞g6
♞h4 76.♞f4 ♞h3+ 77.♞f5 ♞f2 78.♞g2!
1-0**

78.♞g1 ♞h3 79.♞xf2 with stalemate,
was the only thing white had to avoid.

A. Kosteniuk - Lars Madebrink

**1.e4 c5 2.♞f3 d6 3.d4 cxd4 4.♞xd4 ♞f6
5.♞c3 a6 6.♞g5 ♞bd7**



One week ago in the NH Tournament two
of the games started with 6.Bg5 Nbd7
in Najdorf, today's most fashionable
opening line. In round three two of the
top games in Kristiansund Grand Prix
had the same position. Theory develops
in Kristiansund! 7.♞c4 This move was a
long time considered as white's critical
response. Just like in Sozin he is ready to
sacrifice on e6 if black isn't careful.

7...♞b6 8.♞b3

8.♞d2 ♞xb2 is analogous with Poison
Pawn but should be better for black.

8.♞b3 is the most critical move.

8...e6

Black is satisfied. He has removed white's knight from the centre and will gain a tempo with ♖c7 later on.

9. ♖d2 ♙e7

9...♖c7 10. ♙e2 b5 looks like a good alternative.

10.a4 ♖c7 11. ♙e2 b6

Even here black is fine. White's pieces looks a bit clumsy. With the pawn on c4, ♖b3 would make sense, to prepare a4–a5, but now it's out of play. White has to castle short and ♙g5 may be a tactical weakness.

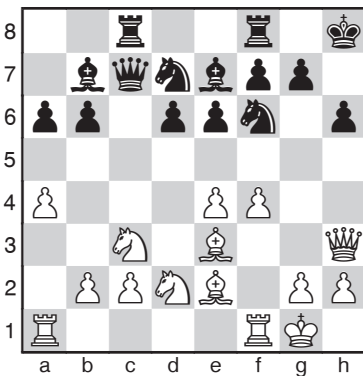
12.0-0 ♙b7 13. ♖e3 h6

13...0-0 is a good alternative.

14. ♙f4 ♖e5 15. ♖d2

White is not unhappy playing this move and will now gain a tempo with f4 later on.

15...0-0 16. ♖g3 ♙h8 17. ♙e3 ♖ac8 18.f4 ♖ed7 19. ♖h3



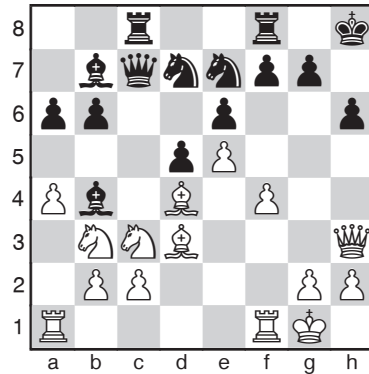
19...d5

This move changes the character of the play. Now white's structure improves and black has to show some concrete play the next few moves.

20.e5 ♖g8?!

Unnecessary passive. 20...♖e4 is fine for black.

21. ♖b3 ♙b4 22. ♙d4 ♖e7 23. ♙d3



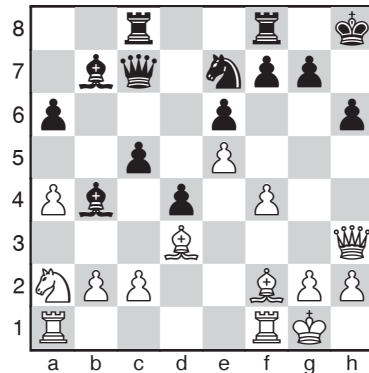
23...♙c5!

Creating counterplay.

24. ♖xc5?

You should never play moves like this, even if it's forced. Before this move white seemed to have slightly better centre control, but now black just crushes through with the c- and d-pawn. All other moves are better.

24...bxc5 25. ♙f2 d4! 26. ♖a2

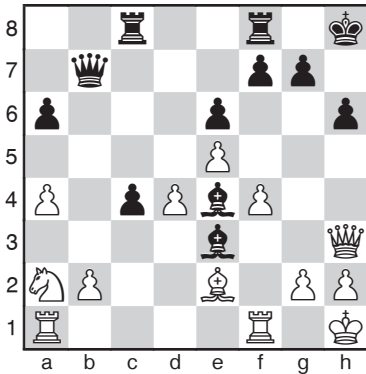


26...♙d2!

Winning another important tempo.

27. ♙h4 c4 28. ♙xe7 ♖xe7 29. ♙e2 ♙e4

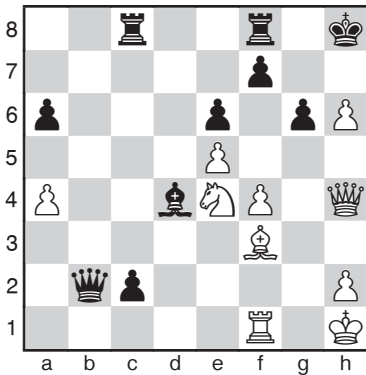
30.c3 ♙e3+ 31. ♙h1 ♖b7 32.cxd4



32...♙xd4

Finally black wins material. During the next six moves Madebrink plays very well and increases his advantage every move.

33.♗c3 ♕f5 34.♕f3 ♖xb2 35.g4 ♗d3
36.♗e4 ♕xf1 37.♖xf1 c3 38.g5 c2
39.gxh6 g6 40.♗h4



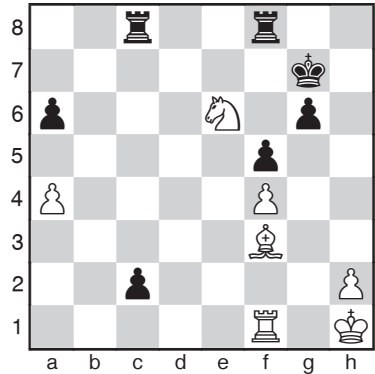
40...f5?

The last move before the time control was not the best. Actually I thought black was lost after this move, but luckily he has a saving move. 40...f6 stops white's threats and promotes the c-pawn next move. Then it's time to count the pieces on the board...

41.♗e7! ♕xe5 42.♗g5

42.fxe5 ♖xc5 43.♗g5 looks dangerous, but the only move, 43...♗c7, defends and wins.

42...♕g7 43.hxg7+ ♖xg7 44.♗xg7+ ♗xg7 45.♗xe6+



45...♗f7!

Det finns en forcerad variant med 45...♗f6 46.♗xf8 c1♗ 47.♖xc1 ♖xc1+ 48.♗g2 ♖c4 som ger svart klar fördel, men partidraget är ännu bättre.

46.♕d5

46.♗g5+ ♗e7 47.♖c1 ♖c3 följt av ♖b8-b1, med vinst.

46...♗e7 47.♖c1 ♖f6 48.♕b7 ♖c3

49.♗d4 ♖b6

White did never get time to coordinate his pieces. The double threat of ♖xb7 and ♖b1 decides the game.

50.♗xc2 ♖xb7 51.♖e1+ ♗f7 52.♗d4

♖e7 53.♖f1 ♖e4 54.♗f3 ♖xa4 55.♖f2

♗f6 56.♗d2 ♖b4 57.♗g2 a5 58.♗f1 a4

59.♖e2 a3 60.♗e3 ♖xe3 0-1

Standings Kristiansund Grand Prix round 3, group A

FM	Joachim Thomassen	2307	2364	Moss	3
GM	Emanuel Berg	0	2612	Burgsvik Alva SK	2½
GM	Tiger Hillarp Persson	0	2538	Lunds ASK	2½
GM	Nils Grandelius	0	2505	Lunds ASK	2½
	Tore Kolås	2123	2222	Trondheim	2½
	Matti Svenge	0	2214	SK Kamraterna	2½
	Alexander R. Flaata	1992	2070	Black Knights	2½
GM	Evgeny Romanov	0	2590		2½
GM	Vladimir Georgiev	0	2586		2
	Lars Madebrink	0	2247	SK Kamraterna	2
	Gudmund Stenersen	2201	2213	SOSS	2
	Håkon Bentsen	2054	2151	Molde	2
	Roar E. Nakken	1881	2120	Aalesunds	2
	Anders Olsen	2007	2076	Kristiansund	2
	Thomas Thomassen	1952	2055	Stavanger	2
	Kjell T Sandum	1922	2053	Kristiansund	2
	Nils-Åke Malmdin	0	2297	Sundsvalls SS	2
	Remi Picard	0	2081	Migne Echecs	2
	Rune Normann	1547	0	Trondheim	2
	Oddmund Sande	1839	2028	Randaberg	2
	Tor Wetle Hoem	1831	1968	Kristiansund	2
	Johan Salomon	1621	1770	Nordstrand	2
	Stein Jensen	1909	2063	Harstad	1½
	Aryan Tari	1938	2060	Asker	1½
	Kjell-Åke Andersson	1939	0	Karlstad AS	1½
	Lars Oskar Hauge	1797	1916	OSS	1½
	Sebastian Mihajlov	1725	1878	OSS	1½
	Eilif Odde	1975	0	Kristiansund	1½
	Emil-Lion Nomat	1580	1826	Aalesunds	1½
	Frode Høva	1549	1753	Follo	1½
	Håvard Ramstad	1699	0	Aalesunds	1½

GM	Alexandra Kosteniuk	0	2519		1
	Björn Särén	1972	0	Karlstad AS	1
	Ole Reza Drønen	1409	0	Aalesund	1
	Kurt Magnus Berg	1788	0	Harstad	1
	Brede Andre Larsen Hagen	1860	2064	TSSK	1
	Rich. Wicklund-Hansen	1789	1891	OSS	1
	Armin Gholami	1640	1836	OSS	1
	Anders Samuelsen Nordli	1558	1568	Trondheimstud	1
	Vegard Simensen	1544	0	Kristiansund	1
	Arne Morten Kästel	1467	0	Molde	½
	Egil A Standal Volda	1682	1863	Ørsta	½
	Havard Bjerkevik	1721	0	Volda Ørsta	½
	Per-Chr. Stenvaag	1592	0	Aalesund	½
	Helge Storeide	1573	0	Aalesunds	½
	Stig Sætre	1518	0	Aalesunds	½
	Fardin Toback	0	0	Kristiansund	½
	Johannes Haug	1442	1640	Nordstrand	½
	Ove H Harestad	1591	1775	Randaberg	0
	Gunnar Bolsø	1505	0	Aalesunds	0

Standings Kristiansund Grand Prix round 3, group B

Olav Skjetnemark	1316	Namsos	3
Øystein Iversen	1308	Trondheim	3
Mats Peter Henøen	1151	Kristiansund	3
Tore Høe Løvaas	1430	Trondheim	2
Rune Øistein Aas	1331	Trondheimstud	2
Anders Stanghelle	1142	Nord-Odal	2
Arman K Ghaderi	1072	Trondheim	2
Øyvind Hoem Vaseng	1042	Kristiansund	2
Jon Oddvar Rambjør	0	Kristiansund	2
Robert Hansen	0		2
Stian Paulen	1004	Volda Ørsta	2
Jonar Lensebakken	1152	Nord-Odal	2
Martin Skog	982	Aalesunds	2
Jan Erik Skog	1388	Aalesunds	2
Henrik Øie Løbersli	0	Kristiansund	2
Cornelius Kvendseth	878	Nordstrand	1 ½
Audun Hoem	1123	Kristiansund	1 ½

Hans-Henry Jacobsen	1204	Tromsø	1
Per Magnus Larsen	877	Porsgrunn	1
Eli Marit Ødegaard	0	Kristiansund	1
Aleksey Gorskiy	0	Kristiansund	1
Bjørn Noralf Dybvik	1165	Aalesunds	1
Erling Nybø	829	Aalesunds	1
Paul Ivar Johansen	753	Trondheim	1
Øystein Halse	746	Kristiansund	1
Elise Sjøttem Jacobsen	659	Tromsø	1
Magnus D. Jensen	0	Kristiansund	1
Emil Andre Olsen	0	Kristiansund	1
Iver Halse	0	Kristiansund	1
Ian Olners Kjenne	0		½
Vegard Kallset	0	Kristiansund	½

Curiosities

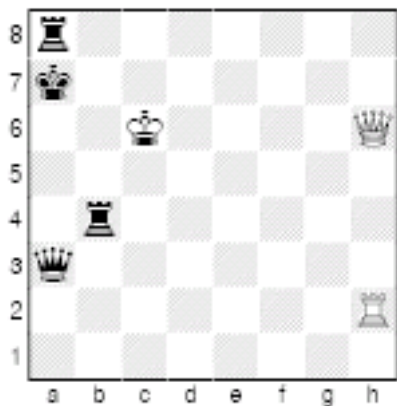
The most expected result of the tournament...

...was the draw between Håkon Bentsen and Kjell Tore Sandum. They always play each other, and they always draw. In round two they played 13 and 12 moves respectively. Their game was removed from the podium, because we knew that it wouldn't last for long. The draw was agreed after 12 moves.

Every day one game will be chosen as the best game. Does your game deserve attention? Do not hesitate to tell us when you leave the score sheet!

Daily problem

White to move and win



The solution to yesterday's problem was **1. ♖a4+! ♔xa4** 1... ♔c4 2. ♜b3+ forces black back. **2. ♖b3+ ♜b5** 3. ♖c4+ ♜c6 **4. ♜d5+ ♜d7** 5. ♖e6+ ♜xd8 **6. ♜f5** with a draw. The only who can lose this with white is the computer, because it captures a rook at d7.

Tromsø 2014

...next month it will be decided where the Chess Olympiad 2014 is played.

Visit tromso2014.no



Kristiansund kommune
I medvind sansett vær

